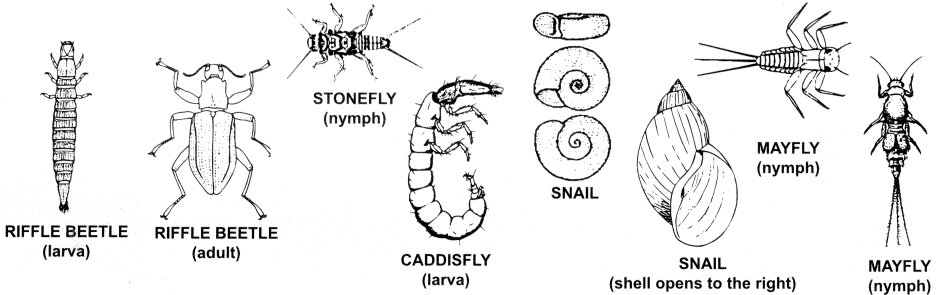
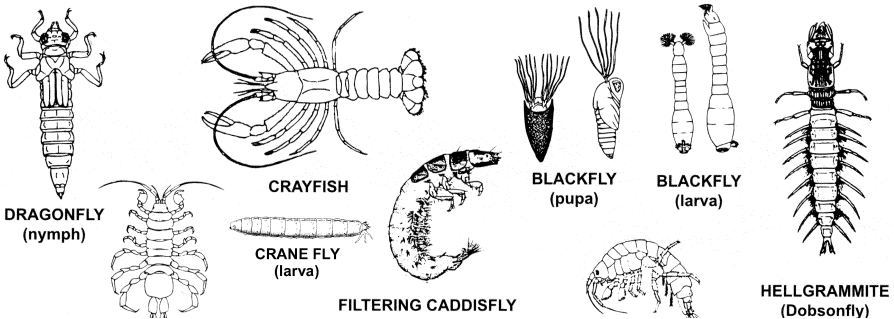


COMMON AQUATIC MACROINVERTEBRATES

GROUP 1: These organisms are generally pollution intolerant. Finding many of these organisms can be a sign of **Excellent or Good Water Quality**.



GROUP 2: These organisms exist in a **Wide Range of Water Quality** conditions.



GROUP 3: These organisms are generally tolerant of pollution. Finding many of these organisms can be a sign of **Fair or Poor Water Quality**.

